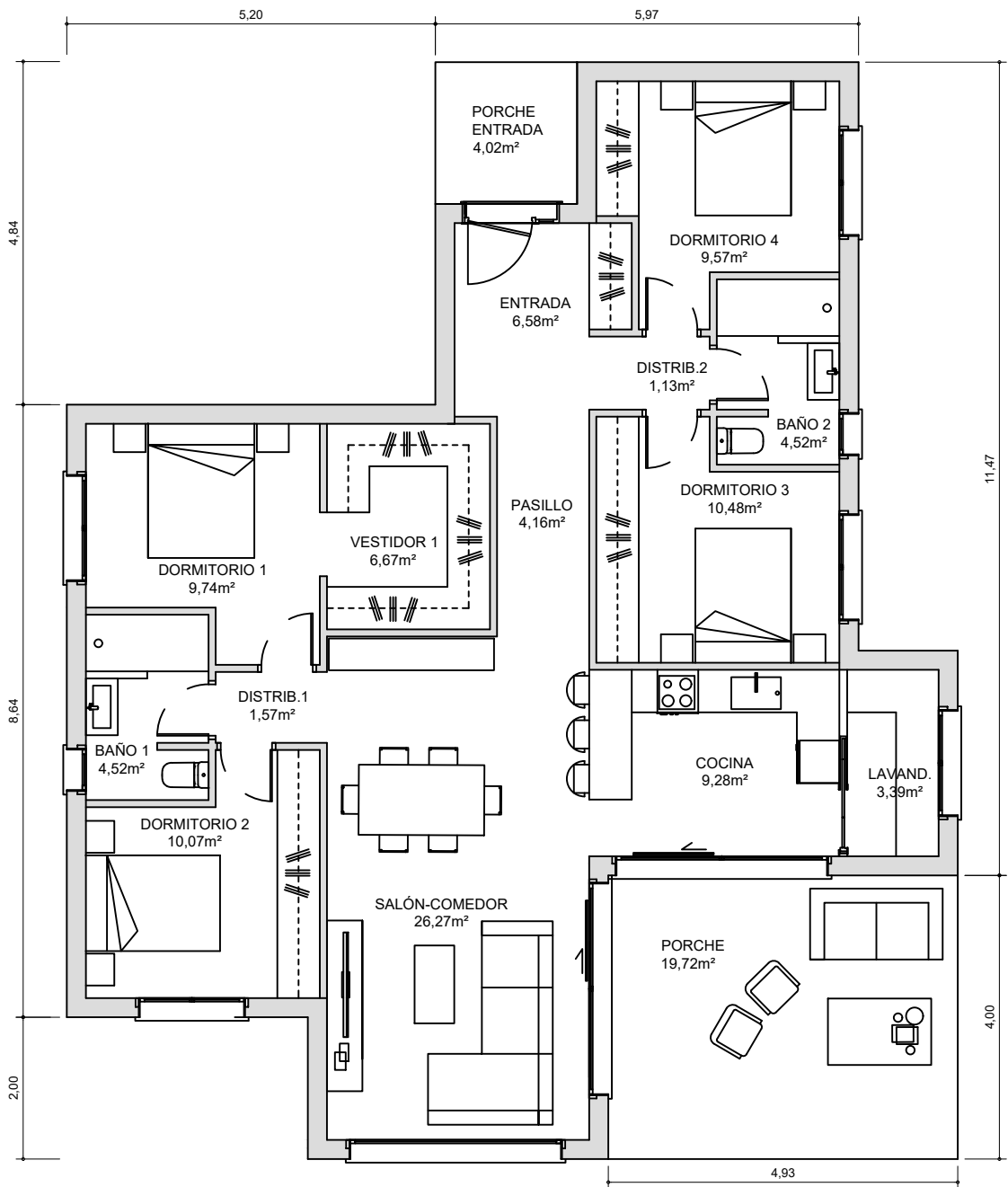


# OVIEDO



SUPERFICIE CONSTRUIDA	
PLANTA BAJA	127,20 m <sup>2</sup>
PORCHE	23,74 m <sup>2</sup>

<b>TOTAL SUPERFICIE CONSTRUIDA</b>	<b>150,94 m<sup>2</sup></b>
------------------------------------	-----------------------------

ACERORMIGON

