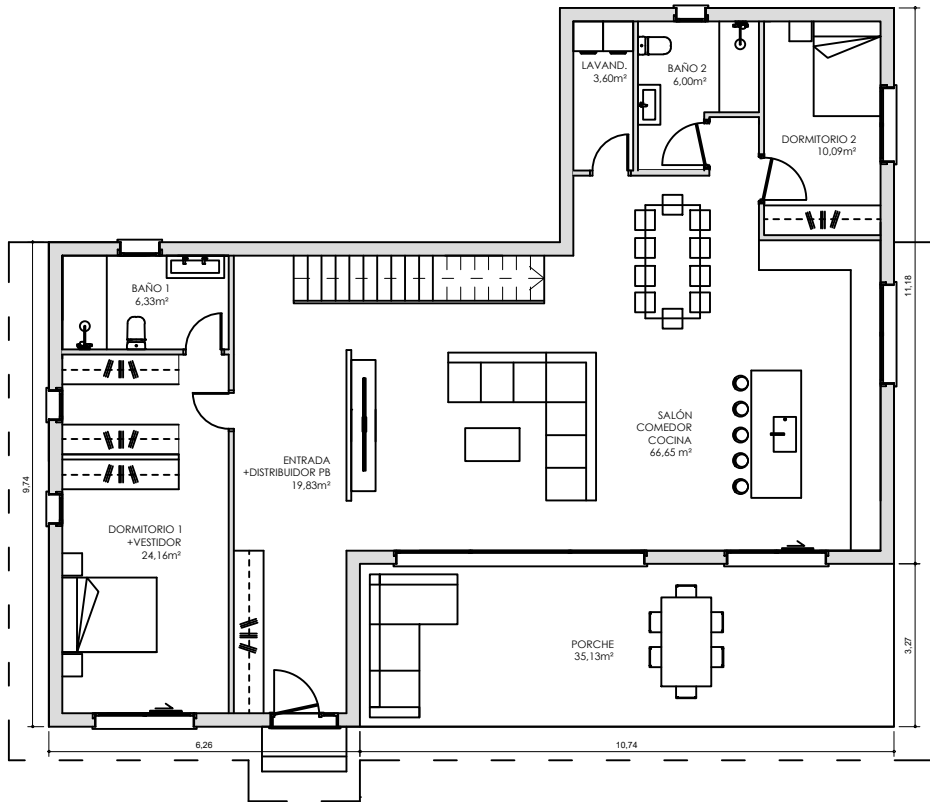
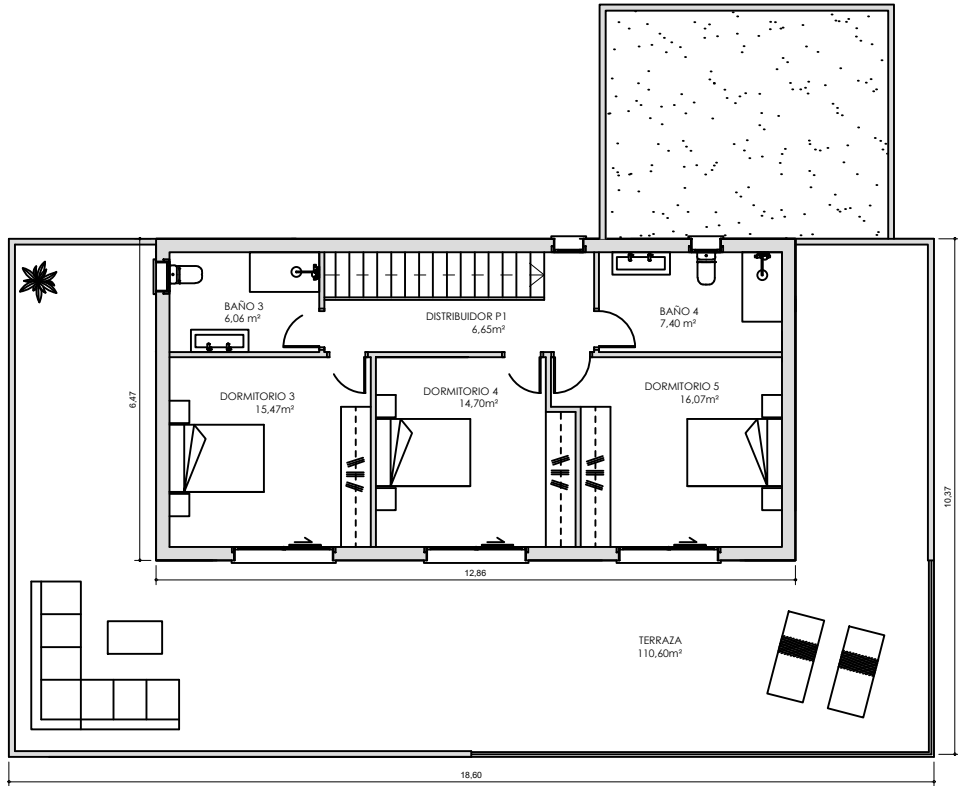


# MEDITERRÁNEA



| SUPERFICIE CONSTRUIDA        |                             |
|------------------------------|-----------------------------|
| PLANTA BAJA                  | 162,10 m <sup>2</sup>       |
| PORCHE                       | 35,13 m <sup>2</sup>        |
| PLANTA PRIMERA               | 83,20 m <sup>2</sup>        |
| <b>TOTAL SUP. CONSTRUIDA</b> | <b>280,43 m<sup>2</sup></b> |
| TERRAZA P1                   | 110,60 m <sup>2</sup>       |

