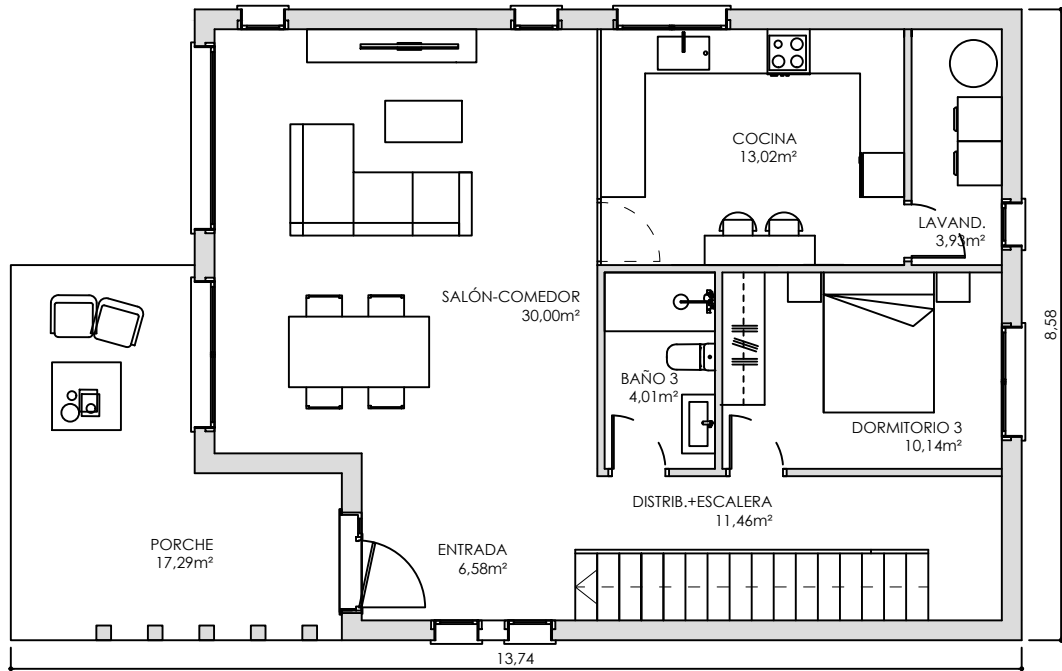
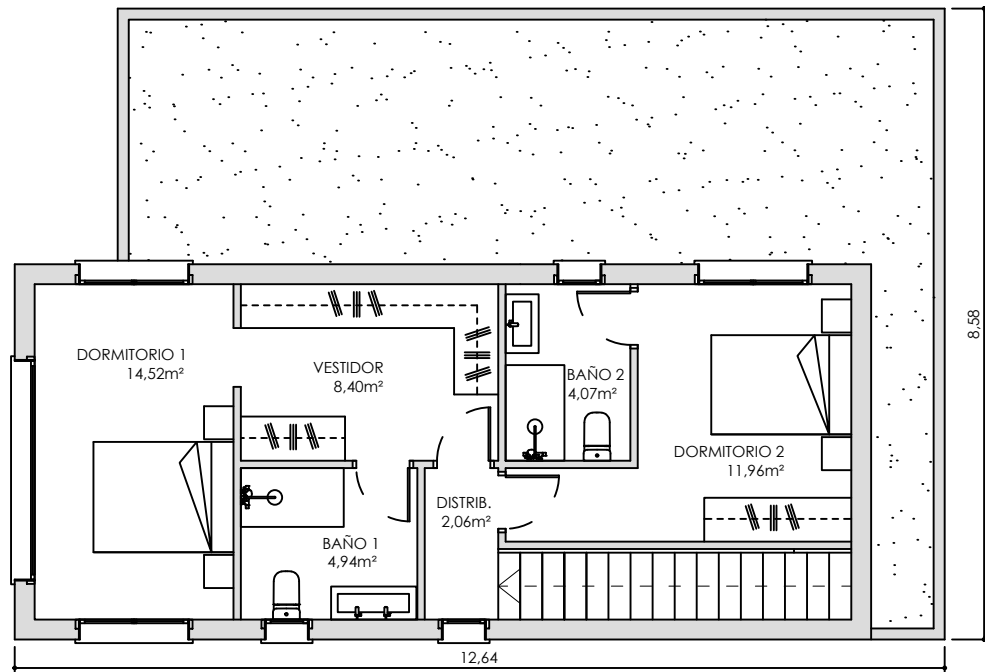


BALEAR 170



SUPERFICIE CONSTRUIDA	
PLANTA BAJA	91,88 m ²
PORCHE	17,29 m ²
TOTAL SUPERFICIE CONSTRUIDA PB	109,17m²
TOTAL SUPERFICIE CONSTRUIDA P1	59,38m²
TOTAL SUPERFICIE CONSTRUIDA PB+P1	168,55m²

