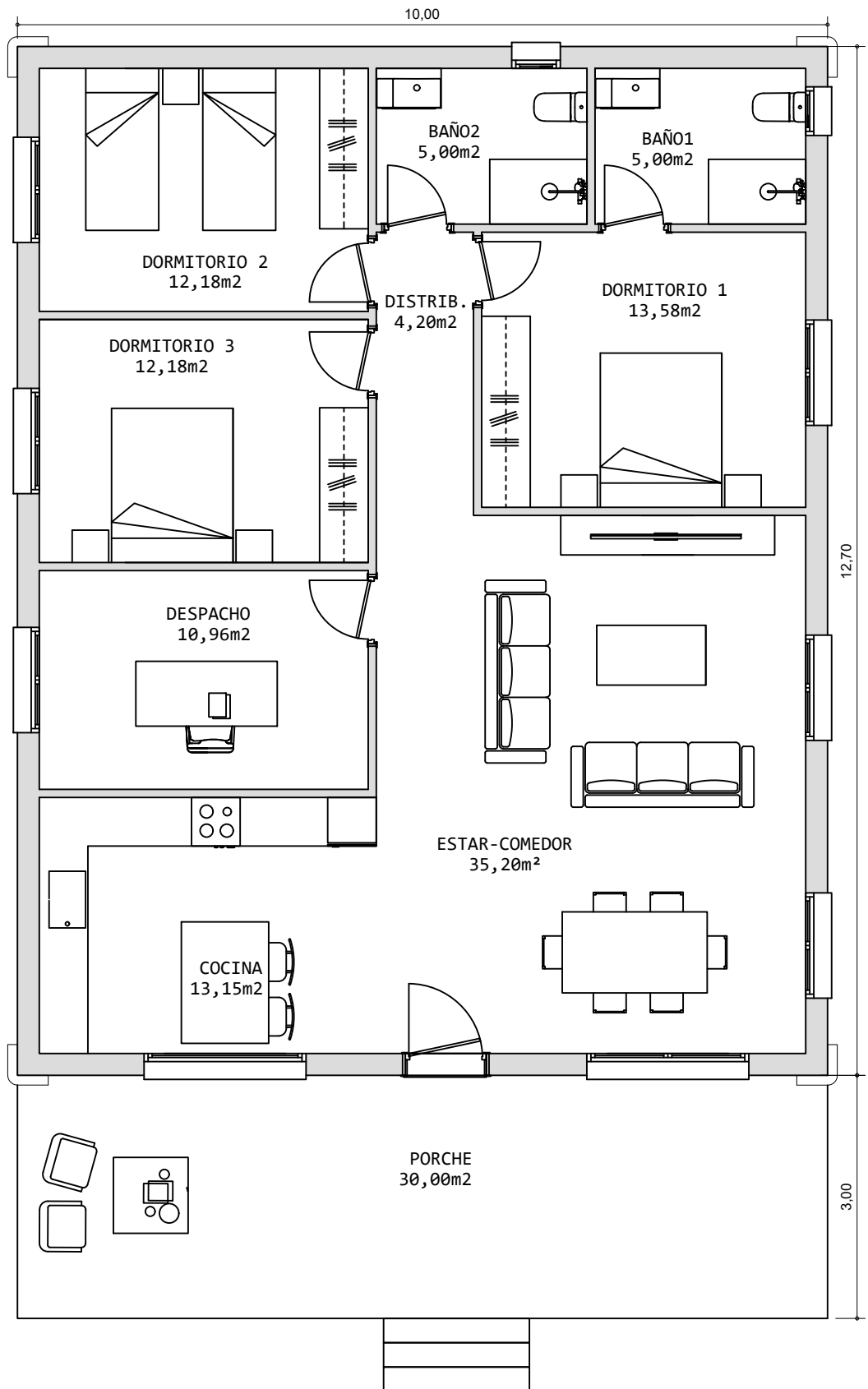


# ZAMORRA



SUPERFICIE CONSTRUIDA	
PLANTA BAJA	127,00 m <sup>2</sup>
PORCHE	30,00 m <sup>2</sup>

<b>TOTAL SUPERFICIE CONSTRUIDA</b>	<b>157,00 m<sup>2</sup></b>
------------------------------------	-----------------------------

ACERORMIGON



QCASA  
MADRID