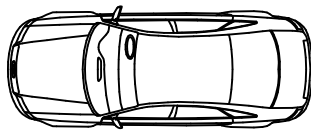
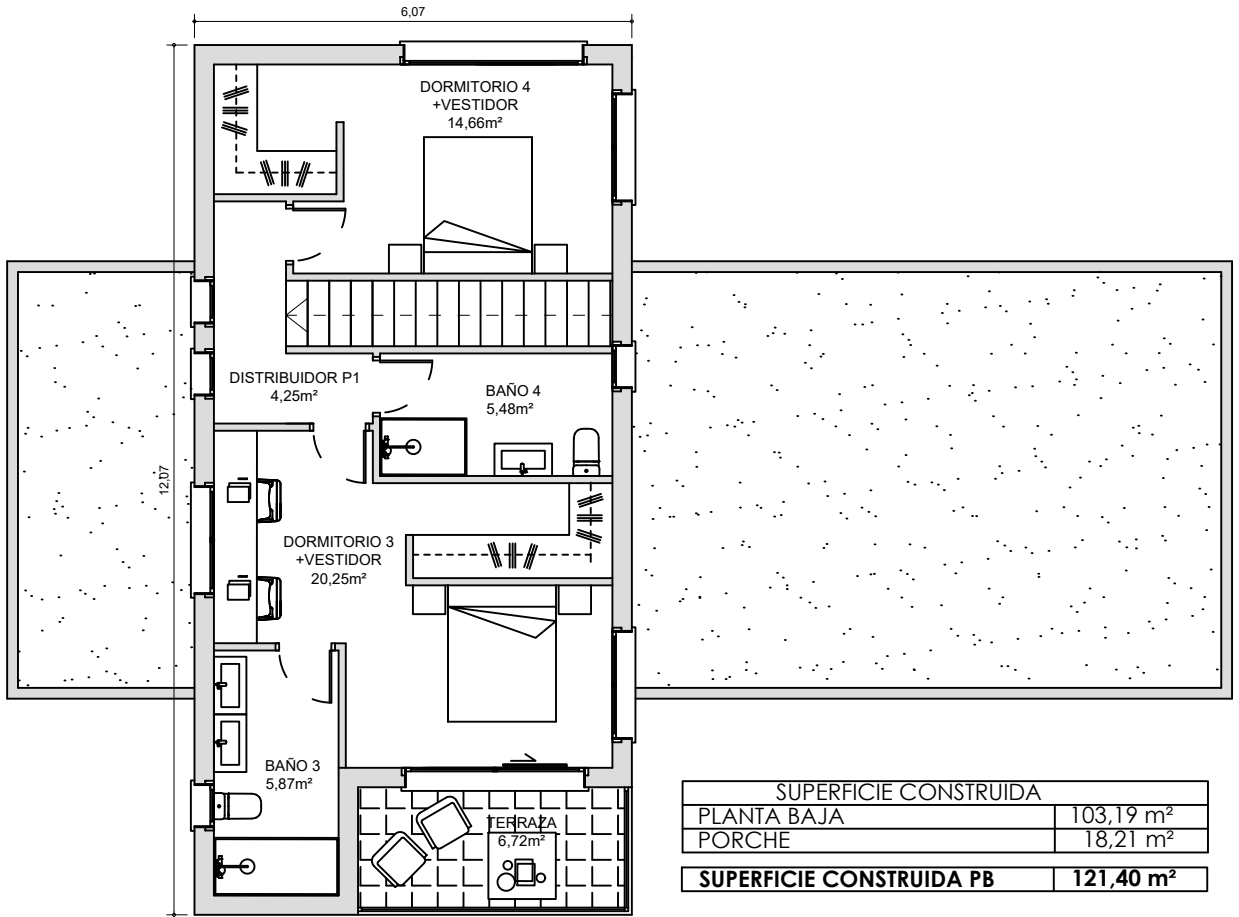
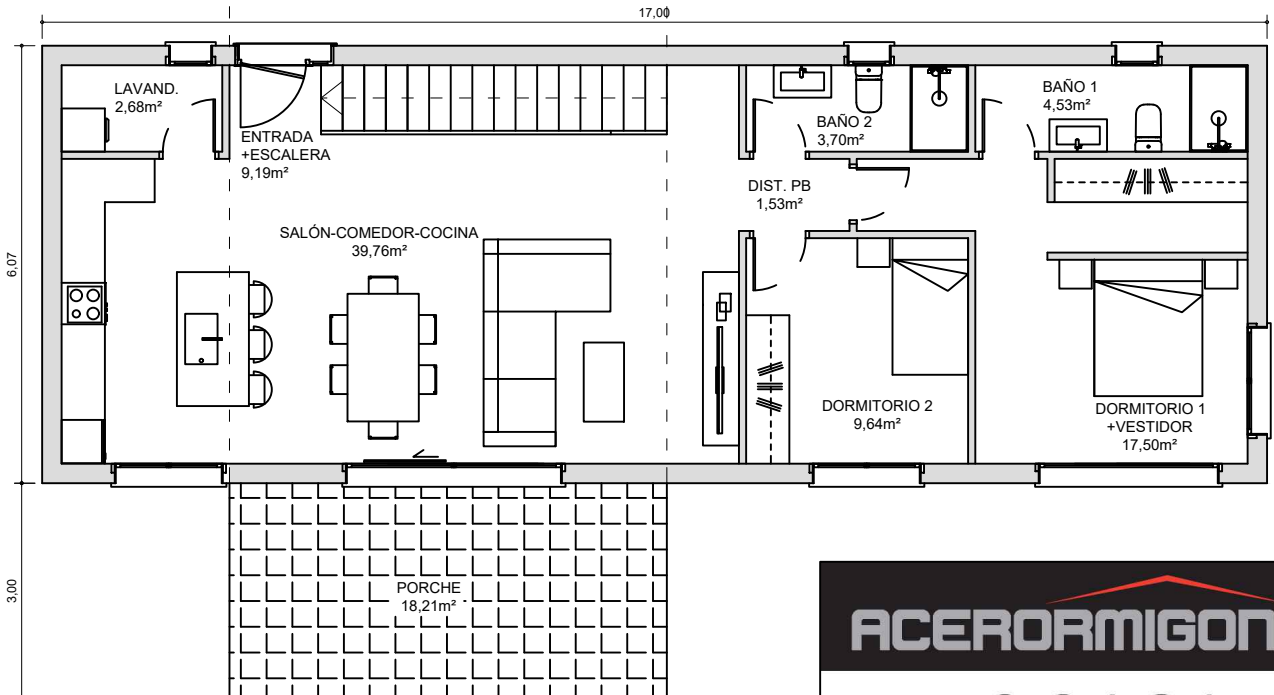


# SIDNEY



SUPERFICIE CONSTRUIDA	
PLANTA BAJA	103,19 m <sup>2</sup>
PORCHE	18,21 m <sup>2</sup>
<b>SUPERFICIE CONSTRUIDA PB</b>	<b>121,40 m<sup>2</sup></b>
PLANTA PRIMERA	66,54 m <sup>2</sup>
TERRAZA	6,72 m <sup>2</sup>
<b>SUPERFICIE CONSTRUIDA P1</b>	<b>73,26 m<sup>2</sup></b>
<b>TOTAL SUPERFICIE CONSTRUIDA</b>	<b>194,66m<sup>2</sup></b>



ACERORMIGON



QCASA  
MADRID